

Intensiv Swingle

Clinically tested by the Universities of Zurich and Bern, Switzerland

Calibrated and efficient stripping in orthodontics

As part of orthodontic treatments, very many cases are documented treated through interproximal space gaining by stripping (IPR). A precise, calibrated reduction of approximal enamel parts is carried out protocolled step by step, assuring maximum safety. A finally well performed finishing and fine polishing contributes to healthy conditions of the treated teeth.

The dual contra-angle Intensiv Swingle for application with oscillating Intensiv Ortho-Strips

The contra-angle Intensiv Swingle combines both functions:

- free axial rotating of the strip, being applied with finishing and polishing of prepared surfaces.
- fixed axial position (12 positions at each 30° within 360°) for exact positioning of the strip, being applied in the resolution of the contact point and for enamel reduction.

Moreover, the small sized contra-angle head allows a significantly improved view of the operating/surgical field.

Product description

- Contra-angle with integrated water spray and optional light.
- Stroke 0.9mm.
- 20.000 oscillating movements with 40.000 rpm.
- With toggle switch to choose free moving or fixed position of strips.
- 12 different axial fixed positions on 360°.
- Strip ejector and cleansing needle (water spray canals) are included in delivery.

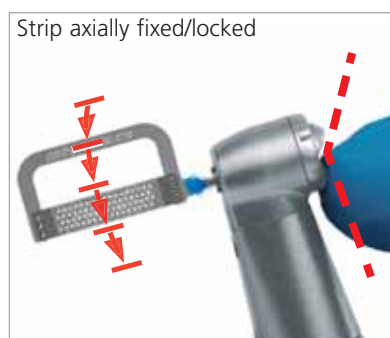
Indications

- Interproximal space creation by stripping according to the protocol IPR (InterProximalReduction) in orthodontic treatments
- Finishing and final polishing of the treated dental surfaces

Benefits

- Safe, efficient and precise interproximal enamel reduction as part of orthodontic treatment
- Easy, controlled opening of the contact points
- Homogeneous and smooth surfaces of the treated teeth
- Pleasant application equally for dentist and patients
- For Intensiv Swingle a two-year warranty is granted
- Sterilizable

A simple to move toggle switch at the contra-angle head permits to choose between axially free rotating or axially fixed Intensiv Ortho-Strips.



1:1



1) Application in Orthodontics during stripping with Intensive Ortho-Strips and Intensive Swingle 2) Calibrated and efficient removal of enamel with Intensive Ortho-Strips and Intensive Swingle

Clinical pictures:

Dr. Francesco Garino, Turin, Italy

Professional Kit



New

Intensive Swingle Professional Kit, WG-69 LT Ortho PROF, W&H Synea, with light

Contra-Angle, Ref. WG-69 LT *

Ejector, Ref. 053

Spray canal cleaner needle, Ref. 054

+ 1 Intensive Ortho-Strips System, opener, Ref. OS08OP-DS

+ 1 Intensive Ortho-Strips System, extracoarse, Ref. OS80XC-DS

+ 1 Intensive Ortho-Strips System, coarse, Ref. OS60C-DS

+ 1 Intensive Ortho-Strips System, medium, Ref. OS40M-DS

+ 1 Intensive Ortho-Strips System, fine, Ref. OS25F-DS

+ 1 Intensive Ortho-Strips System, polishing, Ref. OS15POL-DS

* Contra-Angle without light:

Ref. WG-69 A

Calibrated and efficient stripping in Orthodontics

Professional procedure with use of mechanical Strips for interproximal enamel reduction (IPR)



Intensive Swingle,
with max. 40.000 rpm
(= 20.000 oscillating
movements)



Opening of
interdental
space



Creating additional space by
interproximal enamel reduction
(IPR)



Finishing/
Polishing

New



Intensive Swingle, WG-69 LT W&H Synea, with light

Contra-Angle, Ref. WG-69 LT *

Ejector, Ref. 053

Spray canal cleaner needle, Ref. 054

* Contra-Angle without light:

Ref. WG-69 A

Intensiv Ortho-Strips System, Double-Sided

University of Zurich, Switzerland



Oscillating diamond strips for the bilateral interdental reduction of the tooth size in orthodontics (stripping)

When opening the interdental space and reducing, finishing and polishing enamel in orthodontics, care must be taken to avoid grooves and scratches. It is also important to proceed systematically, following a coarse-to-fine sequence in selecting grits. Unlike manual strips, the Intensiv Ortho-Strips System provides rapid, controlled enamel reduction followed by polishing without unnecessary removal of healthy tooth substance.

Product description

- Flexible strips, double-sided diamond coating
- 6 different grits: 08 µm, serrated for opening of interdental contact points, 80, 60, 40, 25 and 15µm strips for enamel reduction, contouring, finishing and polishing.

To be used in combination with Intensiv Swingle, WG-69 LT Ortho (with light), pages 70-71

Indications

- Opening of the interdental contact points
- Widening of the interdental spaces in orthodontics by bilateral tooth size reduction
- Elimination of minor crowding and treatment finishing in orthodontics
- Bilateral proximal enamel polishing

Benefits

- Efficient opening of the interdental contact points
- Rapid and controlled enamel reduction*
- Proximal contouring, finishing and polishing of both adjacent teeth in a single procedure
- No injuries to patient (lips) or dentist (fingers)

(* Intensiv IPR-DistanceControl, page 74-75)

Intensiv Ortho-Strips System, One-Sided

University of Zurich, Switzerland



Oscillating diamond strips for the monolateral interdental reduction of the tooth size and the proximal polishing in orthodontics (stripping)

When reducing, finishing and polishing enamel in orthodontics (stripping), care must be taken to avoid grooves and scratches. It is also important to proceed systematically, following a coarse-to-fine sequence in selecting grits. Unlike manual strips, the Ortho-Strips One-sided provide rapid, controlled enamel reduction followed by polishing without unnecessary removal of healthy tooth substance and preserving the adjacent teeth.

Product description

- Flexible strips, one-sided diamond coating.
- 6 different grits: 08, 80, 60, 40, 25 and 15µm strips for reduction, contouring, finishing and polishing.
- Left ("L") and right ("R") versions for mesial and distal in the upper and lower jaw.

To be used in combination with Intensiv Swingle, WG-69 LT Ortho (with light), pages 70-71

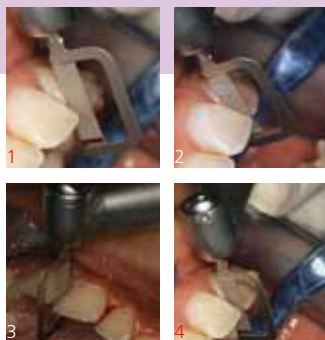
Indications

- Opening and enlargement of the interdental spaces in orthodontics without iatrogenic damage to adjacent teeth
- One-sided proximal contouring, finishing, and polishing

Benefits

- Preservation of healthy tooth substance in the adjacent teeth
- Rapid and controlled enamel reduction*
- No injuries to patient (lips) or dentist (fingers)

(* Intensiv IPR-DistanceControl, see pages 74-75)



1) Opening of the interdental space with OS08OP-DS 2) Contouring with OS40M-DS 3) Controlled finishing with OS25F-DS 4) Polishing with OS15POL-DS

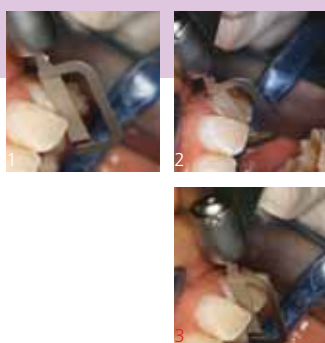
Clinical pictures: Dr. Francesco Garino, Turin, Italy

Ref. OS	08	80	60	40	25	15
494	OS08OP-DS					
524		OS80XC-DS				
514			OS60C-DS			
514				OS40M-DS		
514					OS25F-DS	
504						OS15POL-DS
	Opening	Reduction	Contouring	Contouring	Finishing	Polishing
	Diamond-coated on both sides					

Intensive Ortho-Strips System,
Double-Sided,
Ref. 060B
Assortment of 4 oscillating strips
OS60C-DS, OS40M-DS,
OS25F-DS, OS15POL-DS

All Intensive Ortho-Strips Double-Sided
are available in packages
of 1, 3, 6 or 12 pcs

* Intensive Ortho-Strips System
OS08OP-DS
instead of
Ortho-Strips OS90



1-3) Contouring of a canine mesially with OS40M-L

Clinical pictures: Dr. Francesco Garino, Turin, Italy

Intensive Ortho-Strips System, One-Sided,
Ref. 064
Assortment of 6 oscillating strips
OS40M-L, OS25F-L, OS15POL-L,
OS40M-R, OS25F-R, OS15POL-R

All Intensive Ortho-Strips One-Sided,
are available in packages
of 1, 3, 6 or 12 pcs

Ref. OS	08	80	60	40	25	15
494	OS08OP-R OS08OP-L					
524		OS80XC-R OS80XC-L				
514			OS60C-R OS60C-L			
514				OS40M-R OS40M-L		
514					OS25F-R OS25F-L	
504						OS15POL-R OS15POL-L
	Opening	Reduction	Contouring	Contouring	Finishing	Polishing
	Diamond-coated on one side. L = Left R = Right					